

## >> RP-G1604I

### 16-P Gigabit +4-P SFP Slot Managed Switch



This is a cost-effect high performance 16G L2 Ethernet managed switch - 16\* 10/100/1000Mbps TX ports and 4\* SFP ports are supported. This switch supports remote managed by SNMP, Http and Telnet interfaces, and local managed by console interface. This switch supports lots of L2 switch managed functions, e.g. 802.1Q VLAN, 802.1x Port Security, Rate Control, Port Configuration, Port Mirroring, Port Statistics, QoS functions, ..tc. Auto-MDIX function is supported for every TX port of the switch for easy cable connection.

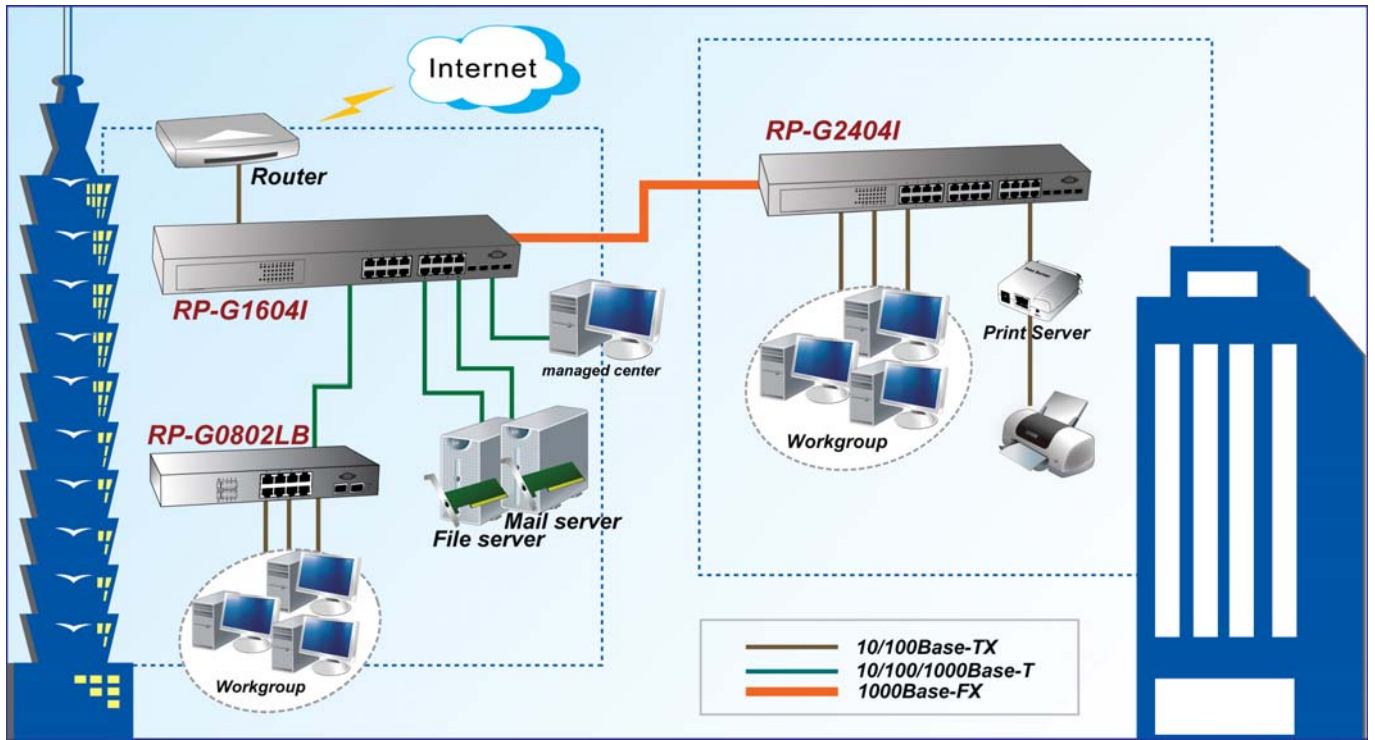
### Feature

- Out-band console and in-band SNMP/Http/Telnet management interface
- Support DHCP client function, Support Port Mirror function
- 802.3ad LACP for link aggregation
- 802.1x for user authentication, Dynamic VLAN and Guest VLAN are supported
- 802.1d Spanning Tree & 802.1w Rapid Spanning Tree
- Port rate limit for ingress/egress traffic
- Static MAC address binding/Dynamic Mac address number limit
- Event log and Syslog are supported
- Administrator IP/Subnet limit for security
- Support Text configuration download and upload

## Specification

<b>Standards</b>	<ul style="list-style-type: none"> <li>• IEEE802.3, IEEE802.3u, IEEE802.3ab, IEEE802.3z</li> <li>• IEEE802.1w, IEEE802.1P, IEEE802.1Q, IEEE802.1x</li> </ul>
<b>Switching Capacity</b>	<ul style="list-style-type: none"> <li>• 16* RJ-45 10/100/1000Mbps ports,4* SFP shared with Port 13~16, DB9 console port</li> <li>• 500K Bytes Packet Buffer, 8K Mac Table Size</li> <li>• Max Packet Size: 1518 bytes (without tag), 9600 bytes for Jumbo Frame</li> </ul>
<b>Flow Control</b>	<ul style="list-style-type: none"> <li>• Back pressure for half duplex, IEEE802.3x for full duplex</li> </ul>
<b>Management</b>	<ul style="list-style-type: none"> <li>• Out-band: Console (CISCO-like Command Line Interface)</li> <li>• In-band: SNMP/Telnet/Http/Https</li> <li>• Administrator IP/Subnet limit is supported</li> </ul>
<b>SNMP agent</b>	<ul style="list-style-type: none"> <li>• Version. 1, 2c</li> <li>• Support MIB II(Interface), Bridge MIB, Etherlike MIB, Private MIB</li> </ul>
<b>VLAN</b>	<ul style="list-style-type: none"> <li>• 802.1Q VLAN with 1024 co-current groups maximum from 4094 VLANs</li> <li>• Port-based VLAN, Private VLAN</li> </ul>
<b>Trunking</b>	<ul style="list-style-type: none"> <li>• 802.3ad LACP</li> </ul>
<b>QoS</b>	<ul style="list-style-type: none"> <li>• 4 priority queues per port for Port-based &amp; 802.1p tagged-based QoS</li> <li>• Strict Priority/WRR scheduling</li> </ul>
<b>Spanning Tree</b>	<ul style="list-style-type: none"> <li>• 802.1d Spanning Tree &amp; 802.1w Rapid Spanning Tree</li> </ul>
<b>IEEE 802.1x</b>	<ul style="list-style-type: none"> <li>• Support Transparent and Authentication modes</li> <li>• Dynamic VLAN &amp; Guest VLAN are supported</li> </ul>
<b>Rate Control</b>	<ul style="list-style-type: none"> <li>• 1~31 levels, with level is configured between 128Kbps~30Mbps</li> </ul>
<b>Storm Control</b>	<ul style="list-style-type: none"> <li>• Broadcast/flooding traffic control</li> </ul>
<b>IP Multicast</b>	<ul style="list-style-type: none"> <li>• Support IGMP Snooping and query function(256 Groups Max.)</li> </ul>
<b>Software Upgrade</b>	<ul style="list-style-type: none"> <li>• Out-band: Xmodem, In-band: TFTP/Http</li> </ul>
<b>Event Log</b>	<ul style="list-style-type: none"> <li>• Syslog is supported</li> </ul>
<b>LED Display</b>	<ul style="list-style-type: none"> <li>• Per Port: Link/Act (Green:Gigabit, Yellow:10/100M), Full Duplex</li> <li>• Per Device: Power, System</li> </ul>
<b>Power Supply</b>	<ul style="list-style-type: none"> <li>• Internal power supply 100~240VAC</li> </ul>
<b>Environment</b>	<ul style="list-style-type: none"> <li>• Operating Temperature: 0°C ~ 50°C</li> <li>• Operating Humidity: 10%~90% (Non-Condensing)</li> </ul>
<b>Dimension</b>	<ul style="list-style-type: none"> <li>• 440 * 172 * 44 mm</li> </ul>
<b>Certifications</b>	<ul style="list-style-type: none"> <li>• FCC, CE</li> </ul>

## Application



## Ordering information

**RP-G1604I**      16-P Gigabit +4-P SFP Slot Managed Switch

### REPOTEC CO., LTD.

3F., No.258, Liancheng Rd., Zhonghe District., New Taipei City 235, Taiwan  
 TEL: 886-2-8227-1888    FAX: 886-2-8227-1818