

## >> RP- G2416I

### 8-P 1000T+ 16-P SFP slot Gigabit L2 Managed Switch



RP-G2416I is a cost-effect high performance 24G L2 Ethernet management switch - 8\* 10/100/1000Mbps TX ports and 16\* SFP ports are supported. This switch supports remote management by SNMP, Http and Telnet interfaces, and local management by console interface. RP-G2416I supports lots of L2 switch management functions, e.g. 802.1Q VLAN, 802.1x Port Security, Rate Control, Port Configuration, Port Mirroring, Port Statistics, QoS functions, ... etc. Auto-MDIX function is supported for every TX port of the switch for easy cable connection.

### Feature

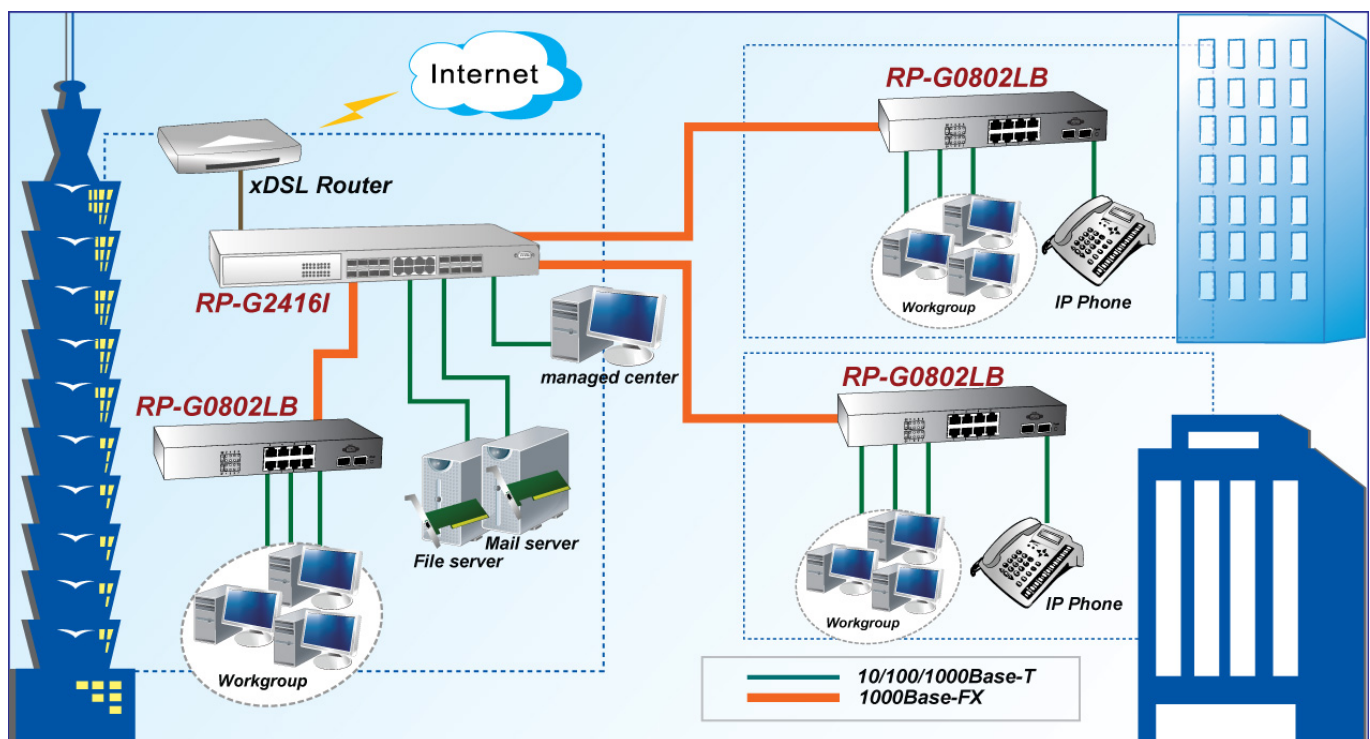
- 8\* RJ45 ports, with 10/100/1000Mbps, Full/Half duplex auto-negotiation and Force MDI/MDI-X or Auto-MDIX functions
- 16\* Gigabit SFP sockets(Port1~Port8 and Port17~Port24)
- Jumbo Frame
- Out-band console and in-band SNMP/Http/Https/Telnet management interface
- CISCO-like Command Line Interface
- 802.1Q VLAN, 1024 active VLAN maximum with VID 1~4094
- Port-based VLAN
- Private VLAN
- DHCP Relay Option 82
- IP-Port Binding
- Storm control
- VLAN Stacking(Q in Q)
- 802.3ad LACP for link aggregation
- 802.1x for user authentication, Dynamic VLAN and Guest VLAN are supported
- IGMP snooping and query and MVR(Multicast VLAN Registration)
- 4 priority queues for Port-based, 802.1P QoS operation, with Strict Priority/WRR scheduling
- 802.1d Spanning Tree Compatible & 802.1w Rapid Spanning Tree
- Port rate limit for ingress/egress traffic
- Static MAC address binding / Dynamic Mac address number limit
- Event log and Syslog are supported
- Administrator IP/Subnet limit for security

- Specification

<b>Standards</b>	<ul style="list-style-type: none"> <li>IEEE802.3(10BaseT Ethernet ),</li> <li>IEEE802.3u(100Base Fast Ethernet),</li> <li>IEEE802.3ab(1000BaseT), IEEE802.3z(1000Base)</li> <li>IEEE802.1D, IEEE802.1w, IEEE802.1P, IEEE802.1Q, IEEE802.1x</li> </ul>
<b>Ports</b>	<ul style="list-style-type: none"> <li>8* RJ45 ports, with 10/100/1000Mbps, Full/Half duplex auto-negotiation and Auto-MDIX and Fource MDI/MDIX function</li> <li>16* GigaBIT SFP sockets(Port1~Port8 and Port17~Port24)</li> </ul>
<b>Filter &amp; Forwarding Rate</b>	<ul style="list-style-type: none"> <li>Full line speed</li> </ul>
<b>Transmission method</b>	<ul style="list-style-type: none"> <li>Store-and-forward</li> </ul>
<b>Packet Buffer</b>	<ul style="list-style-type: none"> <li>500K Bytes</li> </ul>
<b>Mac Table Size</b>	<ul style="list-style-type: none"> <li>8K</li> </ul>
<b>Max Packet Size</b>	<ul style="list-style-type: none"> <li>1518 bytes (without tag), 9600 bytes for Jumbo Frame</li> </ul>
<b>Switching Capacity</b>	<ul style="list-style-type: none"> <li>48 Gbps</li> </ul>
<b>Flow Control</b>	<ul style="list-style-type: none"> <li>Back pressure for half duplex, IEEE802.3x for full duplex</li> </ul>
<b>Management</b>	<ul style="list-style-type: none"> <li>Out-band : Console (CISCO-like Command Line Interface)</li> <li>In-band : SNMP/Telnet/Http/Https</li> <li>Administrator IP/Subnet limit is supported</li> </ul>
<b>DHCP</b>	<ul style="list-style-type: none"> <li>Support DHCP Client / Relay / Option 82 functions</li> </ul>
<b>SNMP agent</b>	<ul style="list-style-type: none"> <li>Version. 1, 2c</li> <li>Support MIB II(RFC1213), Bridge MIB (RFC 1493),</li> <li>VLAN MIB (802.1Q, RFC2674), Private MIB</li> </ul>
<b>VLAN</b>	<ul style="list-style-type: none"> <li>802.1Q VLAN with 1024 co-current groups maximum from 4094 VLANs</li> <li>Port-based VLAN</li> <li>Private VLAN</li> </ul>
<b>VLAN Stacking(Q in Q)</b>	<ul style="list-style-type: none"> <li>Yes</li> </ul>
<b>Trunking</b>	<ul style="list-style-type: none"> <li>Support up to 8 trunks using either static or dynamic trunking(LACP)</li> </ul>
<b>QoS</b>	<ul style="list-style-type: none"> <li>Four priority queues per port for Port-based &amp; 802.1p tagged-based QoS</li> <li>Strict Priority/WRR scheduling</li> </ul>
<b>Spanning Tree</b>	<ul style="list-style-type: none"> <li>802.1d Spanning Tree Compatible &amp; 802.1w Rapid Spanning Tree</li> </ul>
<b>Port Mirror</b>	<ul style="list-style-type: none"> <li>Yes</li> </ul>
<b>Static Mac ID Access Limit</b>	<ul style="list-style-type: none"> <li>Yes, Limit on port</li> </ul>
<b>Dynamic Mac ID Number Limit</b>	<ul style="list-style-type: none"> <li>Yes</li> </ul>
<b>IP-Port Binding</b>	<ul style="list-style-type: none"> <li>Yes</li> </ul>
<b>IEEE 802.1x</b>	<ul style="list-style-type: none"> <li>Yes, Support Transparent and Authentication modes Dynamic VLAN &amp; Guest VLAN are supported</li> </ul>
<b>Rate Control</b>	<ul style="list-style-type: none"> <li>Yes, 1~31 levels, with level is configured between 128Kbps ~ 30Mbps</li> </ul>
<b>Storm Control</b>	<ul style="list-style-type: none"> <li>Yes, for broadcast/flooding/multicast traffic control</li> </ul>
<b>IP Multicast</b>	<ul style="list-style-type: none"> <li>Yes, IGMP Snooping(256 Groups Max.) / query and MVR function</li> </ul>
<b>Software Upgrade</b>	<ul style="list-style-type: none"> <li>Out-band: Xmodem, In-band: TFTP/Http/Https</li> </ul>
<b>Configuration</b>	<ul style="list-style-type: none"> <li>Yes, and Syslog is supported</li> </ul>

<b>Down/Upload</b>	
<b>Text Configuration</b>	<ul style="list-style-type: none"> <li>• Yes, for easy edit</li> </ul>
<b>Event Log</b>	<ul style="list-style-type: none"> <li>• Yes, and Syslog is supported</li> </ul>
<b>LED Display</b>	<ul style="list-style-type: none"> <li>• Per Port : Link/Act (Green: Gigabit, Yellow: 10/100M), Full Duplex</li> <li>• Per Device : Power, System</li> </ul>
<b>Power Consumption</b>	<ul style="list-style-type: none"> <li>• 24W</li> </ul>
<b>Power Supply</b>	<ul style="list-style-type: none"> <li>• Internal Power Supply 100~240VAC, 50/60 Hz</li> </ul>
<b>Environment</b>	<ul style="list-style-type: none"> <li>• Operating Temperature: 0°C ~ 50°C</li> <li>• Operating Humidity: 10%~90% (Non-Condensing)</li> </ul>
<b>Dimension</b>	<ul style="list-style-type: none"> <li>• 440 * 172 * 44 mm</li> </ul>
<b>Certifications</b>	<ul style="list-style-type: none"> <li>• FCC, CE</li> </ul>

## Application



## Ordering information

**RP-G2416I**      8-P 1000T+ 16-P SFP slot Gigabit L2 Managed Switch