

>> RP-F242GIS+

24-P TX/FX(module) + 2G(RJ-45/SFP)

L2+ Managed Modular switch



RP-F242GIS+, 24TX/FX(module) + 2G Combo(RJ45/SFP) ports 10/100/1000 Mbps Ethernet management switch, is a high performance and module designed management switch. This switch features three module slots at front site designed for customers to change the hardware configuration according to different network environments, besides it also has two gigabit combo ports (RJ45/SFP) at rear site for high speed connection expansion.

RP-F242GIS+ supports remote management function by SNMP, Http, Https and Telnet operations. Also, it supports lots of functions for L2 switch management, e.g. 802.1Q VLAN, 802.1x Port Security, Rate Control, Port Configuration, Port Mirroring, Port Statistics, QoS functions.

Feature

- Three module design, three 8-port TX or FX module slots
- This switch could support 24*TX+2G or 24*FX+2G or 16*TX+8*FX+2G or 8*TX+16*FX+2G
- 2* gigabit ports with RJ45 (10/100/1000TX) / SFP supported (auto-detection)
- Support out-band console and in-band SNMP/Http/Telnet management interface
- Support Https web security function
- 4 priority queues are supported on each port for QoS application
- Support port-based VLAN, 802.1Q VLAN and Private VLAN
- Support protected port and LoopBack Detection function
- Support Q-in-Q(double tagging) function
- Support static Mac address access limit and dynamic Mac address number on port
- Support IP-Mac Binding on port
- Support IEEE 802.1x port security function, and Dynamic VLAN, Guest VLAN functions
- Support ACL function for L2 ~ L4 packet control

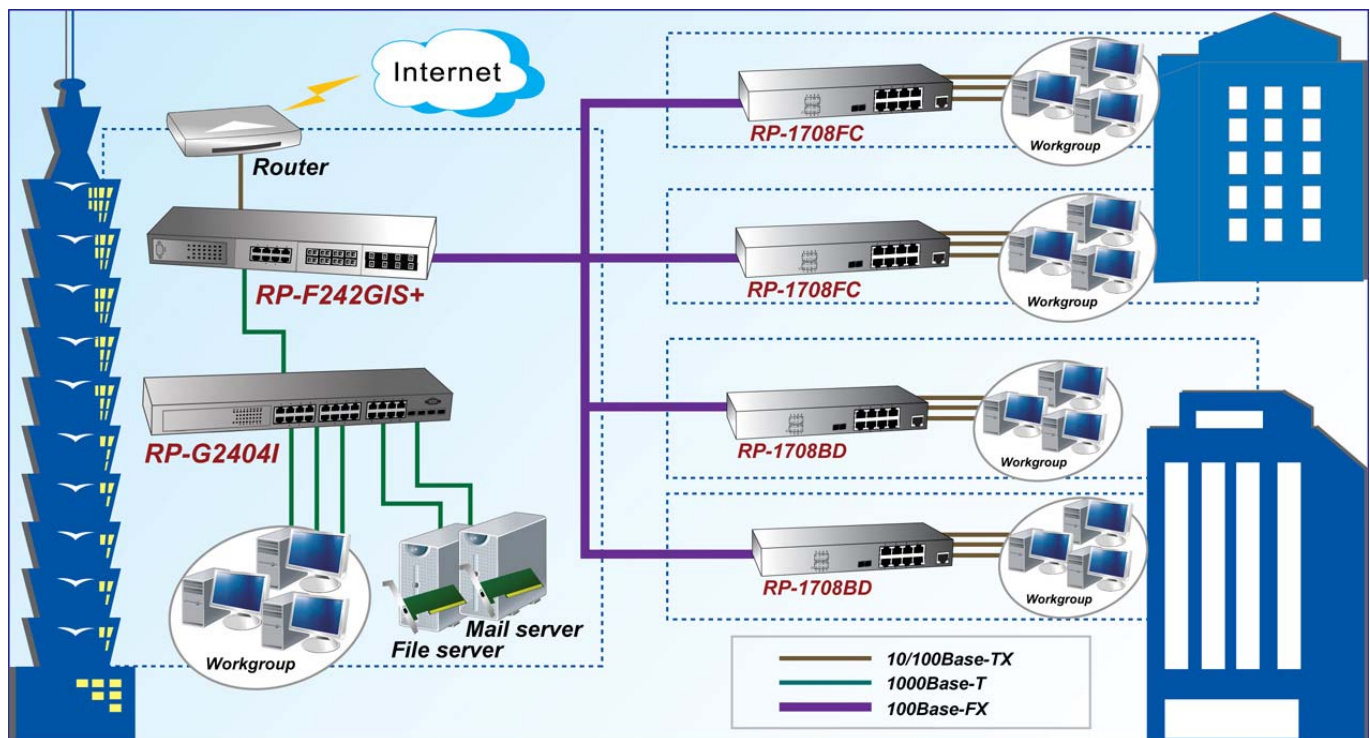
- Support 802.1d Spanning Tree Compatible & 802.1w Rapid Spanning Tree
- Support ingress/egress rate control on port
- Support broadcast/multicast/flooding traffic control
- Support IP Multicast with IGMP snooping / query / fast leave / filtering /group limited / MVR
- Support DHCP Client / DHCP Relay / DHCP Option 82 / DHCP Snooping function
- Support RMON 1,2,3,9
- Support remote port configuration setting and statistics monitoring
- Support Text configuration download and upload

Specification

Standards	<ul style="list-style-type: none"> • IEEE802.3(10BaseT Ethernet), • IEEE802.3u(100Base Fast Ethernet), • IEEE802.3ab(1000BaseT), IEEE802.3z(1000Base) • IEEE802.1w, IEEE802.1P, IEEE802.1Q, IEEE802.1x
Ports	<ul style="list-style-type: none"> • Three 8-port TX/FX module slots • 2* Combo RJ45/SFP ports for gigabit connections (Port 25,26) • Console Port: DB9 console port
LED	<ul style="list-style-type: none"> • Per Port: Link/Activity, FDX/Col • Per Device: Power
Filter & Forwarding Rate	<ul style="list-style-type: none"> • Full line speed
Transmission method	<ul style="list-style-type: none"> • Store-and-forward
Switching Capacity	<ul style="list-style-type: none"> • 8.8Gbps
Packet Buffer	<ul style="list-style-type: none"> • 384K Bytes (Packet buffer & Control Memory)
Mac Table Size	<ul style="list-style-type: none"> • 8K
Max Packet Size	<ul style="list-style-type: none"> • 2048 bytes (including 4 bytes CRC checksum)
Flow Control	<ul style="list-style-type: none"> • Back pressure for half duplex, IEEE802.3x for full duplex
Management	<ul style="list-style-type: none"> • Out-band : Console (Command Line Interface) • In-band : SNMP/Telnet/Http/Https(SSL)
DHCP	<ul style="list-style-type: none"> • Support DHCP Client / Relay / Option 82 functions
SNMP agent	<ul style="list-style-type: none"> • Version. 1, 2c • Support MIB II(RFC1213), Bridge MIB, VLAN MIB, Private MIB
RMON	<ul style="list-style-type: none"> • Groups 1, 2, 3, 9(Alarm, Statistics, History, Event)
Management Security	<ul style="list-style-type: none"> • Limit by IP(Subnet)/Action(View/Modify)/Interface(Telnet/Web/SNMP)
Logging	<ul style="list-style-type: none"> • Support Local Logging and Syslog
Security	<ul style="list-style-type: none"> • Static Mac ID Access Limit: Limit on port • Dynamic Mac ID Limit: Limit Mac ID number on port • IP-Mac-Port Binding: 256 entries • IEEE 802.1x: Support Transparent and Authentication modes and support Dynamic VLAN and Guest VLAN functions
VLAN	<ul style="list-style-type: none"> • SVL/IVL Mode • Port-based VLAN / Metro VLAN / Private VLAN / Q-in-Q / GVRP • 802.1Q VLAN, with 1024 co-current groups maximum from 4094 VLANs
LoopBack Detection	<ul style="list-style-type: none"> • Yes
Protected Port	<ul style="list-style-type: none"> • Yes
Trunking	<ul style="list-style-type: none"> • 14 groups Max. with Static and Dynamic combined up to 8 ports for a trunk group

QoS	<ul style="list-style-type: none"> Four priority queues per port, Port-based / 802.1p / DiffServ QoS With Strict Priority / WRR scheduling
Spanning Tree	<ul style="list-style-type: none"> Support IEEE 802.1w Rapid Spanning Tree, /w 802.1D compatible mode
Port Mirror	<ul style="list-style-type: none"> for Egress/Ingress packets, support DA/SA filtering function
Rate Control	<ul style="list-style-type: none"> Limit on port for both Ingress/Egress traffic, with 62.5Kbps or 1Mbps step
Storm Control	<ul style="list-style-type: none"> for broadcast/multicast/flooding traffic control
IP Multicast	<ul style="list-style-type: none"> Support IGMP Snooping / IGMP Query function / MVR function
ACL	<ul style="list-style-type: none"> L2/L2+L3/L3+L4 packet control (256 entries)
Maintenance	<ul style="list-style-type: none"> Software Upgrade: Out-band: Xmodem, In-band: TFTP Support Event Log and Syslog Support Text Configuration
Power Supply	<ul style="list-style-type: none"> Internal power supply 100-240VAC
Power Consumption	<ul style="list-style-type: none"> 29W
Environment	<ul style="list-style-type: none"> Operating temperature : 0°C to 50°C Operating Humidity:10% to 90% (Non-Condensing)
Dimension	<ul style="list-style-type: none"> 440 * 254 * 44 mm
Certifications	<ul style="list-style-type: none"> FCC, CE

Application



Ordering information

RP-F242GIS+	3-slot 24*TX/FX+2G(RJ-45/SFP) ports Managed Modular switch
Optional Module:	
MOD-100FS8C	8*SC 100Base Single-Mode ports
MOD-100FM8C	8*SC 100Base Multi-Mode ports
MOD-100T8TX	8*TX 10/100Mbps ports
MOD-BD8A15	8*WDM 100Mbps ports (TX1310nm/15km)
MOD-BD8B15	8*WDM 100Mbps ports (TX1550nm/15km)
MOD-BD8A25	8*WDM 100Mbps ports (TX1310nm/25km)
MOD-BD8B25	8*WDM 100Mbps ports (TX1550nm/25km)