



RP-G0401DB

4-P Gigabit + 1-SFP Slot Ethernet Switch



Easily boost your networking throughput; the equips 4 Gigabit ports that lead you to a real Gigabit connection. Users are now able to transfer large and high bandwidth-needed files faster and hence get a real efficiency improvement. In addition to the cooper port, 1 of the port supports fiber connection with the equipped Mini-GBIC ports for obtaining long-distance communication.

The switch offers users with fast and reliable network. The store-and-forward architecture filters errors and forwards packets in a non-blocking environment. Flow control ensures the correctness of data transmitting. The 802.3x and backpressure flow control mechanisms work respectively for full and half duplex modes.

The switch features with easy installation and maintenance. It supports Nway auto-negotiation protocol that detects the networking speed (10/100/1000 Mbps) and the duplex modes (Full/Half) automatically. Auto-MDI/MDI-X function alleviates the effort to use crossover cables. Also, rich diagnostic LEDs are provided for users to get real-time information of the connection status.

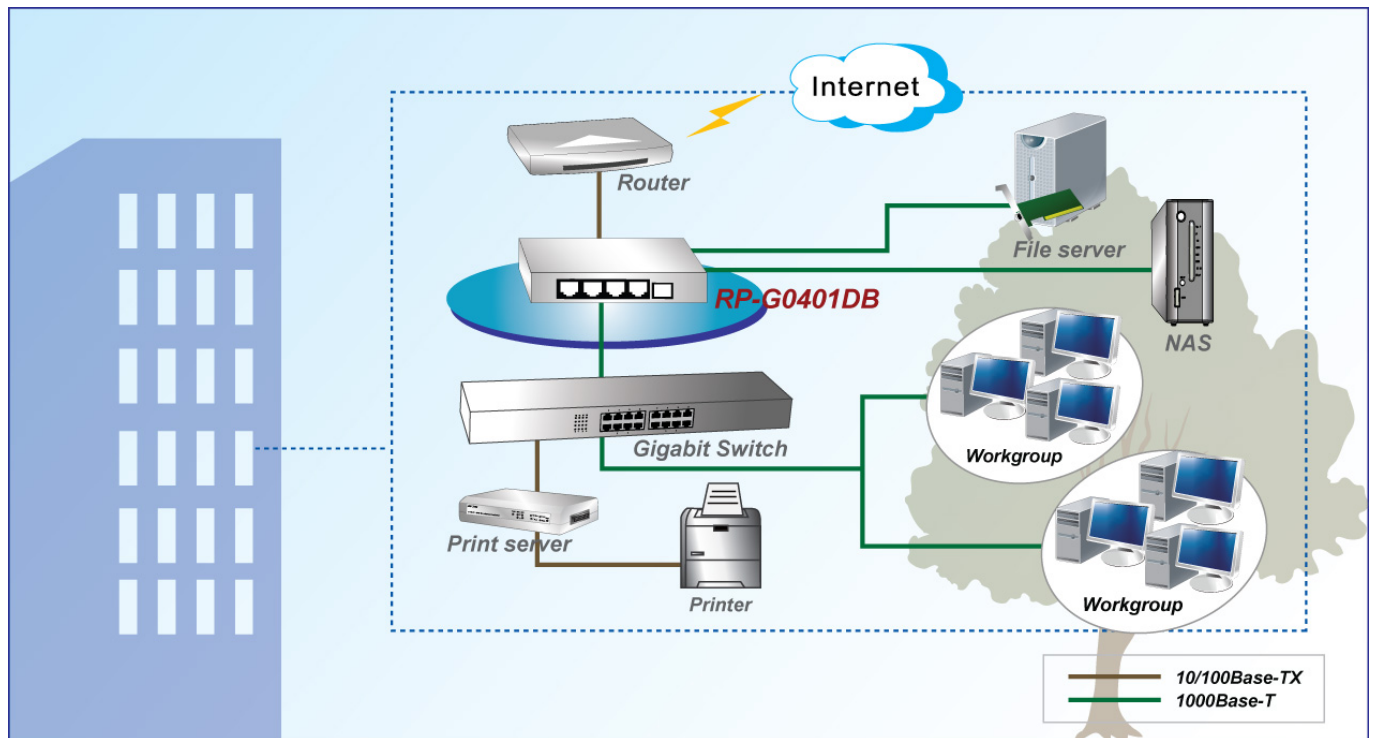
Feature

- 4* 10/100/1000 Mbps RJ-45 Nway ports
- 1* Mini-GBIC port for optional fiber optical communication
- Supports NWay protocol for speed (10/100/1000Mbps) and duplex mode (Half/Full) auto-detection
- Support auto-detection for mini GBIC module inset
- Supports MDI/MDI-X auto crossover
- Supports full and half duplex operation on all copper ports
- Supports back-pressure (half duplex) and flow control (IEEE 802.3x)
- Wire-speed packet filtering and forwarding rate
- Store-and-forward architecture

Specification

Standards	<ul style="list-style-type: none"> • IEEE 802.3 10BaseT • IEEE 802.3u 100BaseTX • IEEE 802.3ab 1000BaseT • IEEE 802.3z 1000BaseSX/LX • IEEE 802.3x Flow Control
Interface	<ul style="list-style-type: none"> • 4* 10/100/1000Mbps RJ-45 switching ports • 1* Mini-GBIC port
Jumbo frame	<ul style="list-style-type: none"> • Supports 9K bytes Jumbo frame
MAC address	<ul style="list-style-type: none"> • Supports 4K bytes MAC address entries in whole system
Buffer memory	<ul style="list-style-type: none"> • 1024K bits buffer memory
Data Transfer Rate	<ul style="list-style-type: none"> • Network speed: 10/100/1000Mbps • 10Mbps: Full/Half duplex • 100Mbps: Full/Half duplex • 1000Mbps: Full duplex
LED Indicators	<ul style="list-style-type: none"> • Per Port: Link/Act, 1000M • Per Unit: Power
Power Consumption	<ul style="list-style-type: none"> • 10 Watts (Max)
Power Supply	<ul style="list-style-type: none"> • External power adapter DC5V 2A
Environment	<ul style="list-style-type: none"> • Operating Temperature: 0°C~45°C • Operating Humidity : 10%~90% (Non-Condensing)
Dimension	<ul style="list-style-type: none"> • 130 * 77 * 24 mm
Certification	<ul style="list-style-type: none"> • FCC, CE

Specification



Ordering information

RP- G0401DB 4-P Gigabit + 1-SFP Slot Ethernet Switch

REPOTEC CO., LTD.

3F., No.258, Liancheng Rd., Zhonghe District., New Taipei City 235, Taiwan
 TEL: 886-2-8227-1888 FAX: 886-2-8227-1818