

RP-G3224WB

24-P Fast Ethernet + 2-P Gigabit (TP/SFP) Combo Web-Smart Switch



The device provides smart and efficient management functions and supports 24 10/100M auto-negotiation Ethernet port & 2 gigabit RJ45/SFP (mini GBIC) multiplex ports, to increase bandwidth and reduce access latency for the client connection and meet the needed of high load. RP-G3224WB supports WEB management, port bandwidth control, port mirroring, port trunk, VLAN classification, QoS control strategy, security settings and other functions.

It is an ideal choice for enterprises to built cost-effective and high-efficiency network.

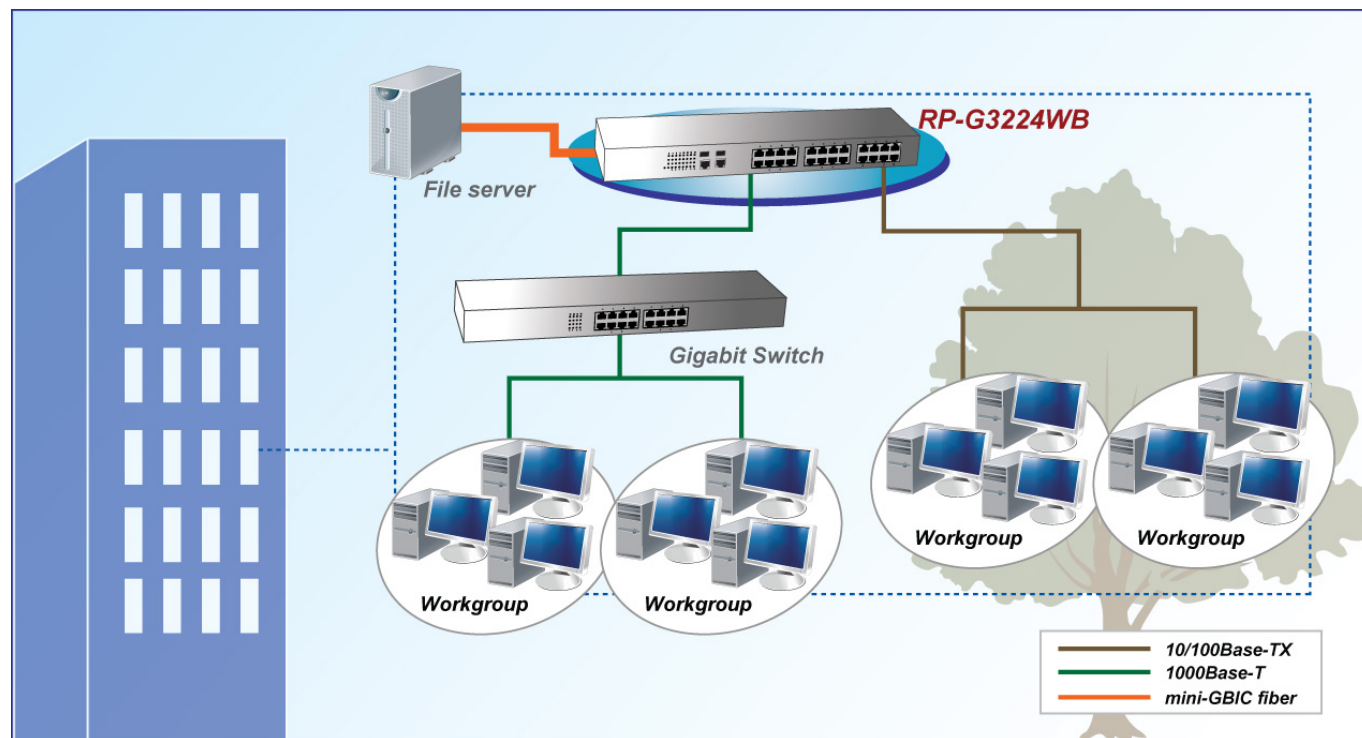
Feature

- 24 10/100M auto-negotiation RJ45 ports, 2 Gigabit RJ45/SFP multiplex port
- Support for MAC address self-learning
- Support port bandwidth control, broadcast storm control, port aggregation
- Support IGMP (V1, V2) Snooping (Multicast Application)
- Support SNMP(V1,V2)
- Support Port based VLAN, 802.1Q VLAN, and many-to-one settings
- Support for VLAN across functions
- Support for port number priority QoS of port-based, 802.1p, IP TOS / DS, and TCP / UDP
- Support for MAC address binding, TCP-UDP port filtering security settings
- Support port mirroring and port traffic statistics function
- Support pure WEB management interface

Specification

Standards	<ul style="list-style-type: none">• IEEE 802.3 , IEEE 802.3u 100Base-TX Fast Ethernet• IEEE 802.3ab 1000Base-T Gigabit Ethernet• IEEE 802.3x Full Duplex Flow Control• IEEE 802.3z (1000Base-X)• IEEE 802.1p Traffic prioritization
Interface	<ul style="list-style-type: none">• 24* 10BaseT/ 100BaseTX RJ-45 ports• 2* 10BaseT/ 100BaseTX/1000BaseT RJ-45 ports• 2* SFP slots• One Restore Default Button
NWay Protocol Support	<ul style="list-style-type: none">• 10/100Mbps: Full-duplex, Half-duplex• 1000Mbps: Full-duplex
Background Bandwidth	<ul style="list-style-type: none">• 8.8Gbps
MAC Address Table	<ul style="list-style-type: none">• 8K
Port Management	<ul style="list-style-type: none">• Port setting• Port bandwidth control• Broadcast Storm Control• Port traffic statistics• Trunk
VLAN Setting	<ul style="list-style-type: none">• Port-based, 802.1p, IP TOS/DS and TCP/UDP port number• Based on 802.1Q VLAN• Many-to-one setting
QoS priority	<ul style="list-style-type: none">• Port-based, 802.1p, IP TOS/DS and TCP/UDP port number• Queues scheduling algorithm
Security Settings	<ul style="list-style-type: none">• MAC address binding• TCP/UDP port number filtering
LED Indications	<ul style="list-style-type: none">• Power, Link/Act 1~26, Speed 1~26
Power Consumption	<ul style="list-style-type: none">• 30W
Power Supply	<ul style="list-style-type: none">• Internal Power Supply 100~240VAC, 50~60Hz
Environment	<ul style="list-style-type: none">• Operating temperature : 0°C to 40°C• Operating Humidity:10% to 90% (Non-Condensing)
Dimension	<ul style="list-style-type: none">• 440 * 180 * 44mm
Certification	<ul style="list-style-type: none">• FCC, CE

Application



Ordering information

RP-G3224WB 24-P Fast Ethernet + 2-P Gigabit (TP/SFP) Combo Web-Smart Switch

REPOTEC CO., LTD.

3F., No.258, Liancheng Rd., Zhonghe District., New Taipei City 235, Taiwan

TEL: 886-2-8227-1888 FAX: 886-2-8227-1818